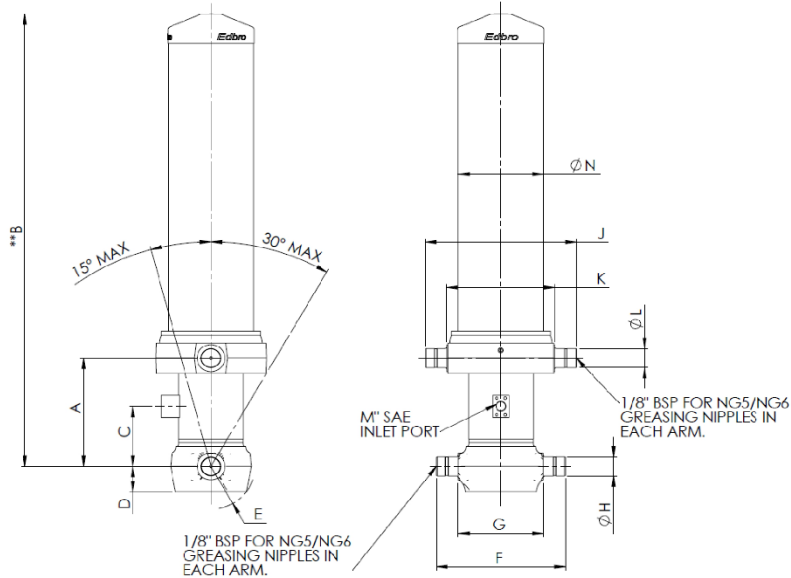


## Datasheet for Cylinder CS17L058983S25A14C 5 stage lightweight cylinder with trunnion mount & outer cover



All stages hard chromed

\*\* Allow 50mm to remove cap for servicing

Approx. weight 328kg

SPECIFICATION					TIPPING CAPACITY 20-24 TONNES					TIPPING CAPACITY AT WORKING PRESSURE				
Stage	Tube Diameter (mm)	Length (mm)	Stroke (mm)	Swept Volume (litres)										
Base	198	2025	---	-										
1st Stage	176	1990	1770	43.1										
2nd Stage	155	1990	1787	33.7										
3rd Stage	136	1990	1797	26.1										
4th Stage	117	1990	1812	19.5										
5th Stage	98	1990	1817	13.7										
Total			8983											

BODY LENGTH (BL)						OH	d	r
11230		11792		12353				
22 t	47°	21 t	44°	20 t	42°	150	290	900
23 t	48°	22 t	46°	21 t	43°	450		
24 t	49°	23 t	47°	22 t	45°	750		

Higher working pressures and tipping capacities may be possible.  
To check your application email - applications@edbro.co.uk

APPLICATION INFORMATION					
Working Pressure	101	bar	Swept Oil Volume	136.1	litres
Maximum Pressure	190	bar	Priming Volume	28.4	litres
Maximum 1st Stage Thrust	265	kN	Total Volume	164.5	litres

DIMENSIONS														
A	898	mm	D	55	mm	G	245	mm	K	318	mm	ØN	248	mm
B	2109	mm	E	121	mm	ØH	60.00	mm	ØL	60.00	mm			
C	250	mm	F	381	mm	J	448	mm	M	1" SAE				

- Notes**
- This cylinder is intended for lifting purposes only and side load conditions should be avoided.
  - Cylinder is painted in primer to RAL5013
  - Refer to [www.edbro.com](http://www.edbro.com) for:-
    - Bracket details
    - Installation instructions that must be observed
    - Correct oil selection
    - An explanation of tipping capacity