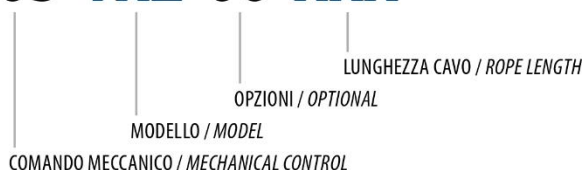


## TXZ

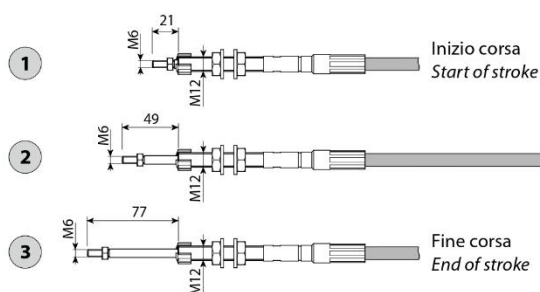
COMANDO MECCANICO A LEVA SINGOLA  
SINGLE-LEVER MECHANICAL CONTROL

CODICE DI ORDINAZIONE / ORDERING CODE

### 405 TXZ 00 XXX



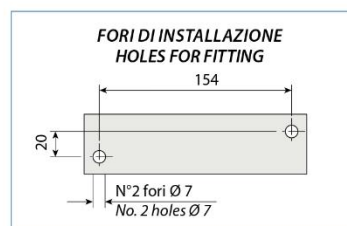
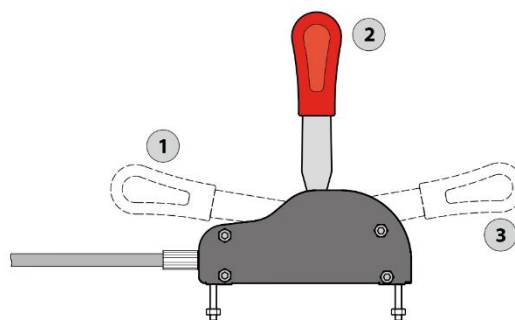
TXZ 1.5	TXZ 3	TXZ 4.5
TXZ 2	TXZ 3.5	TXZ 5
TXZ 2.5	TXZ 4	TXZ 6



**CORSA TOTALE 56 mm / TOTAL STROKE 56 mm**

### CARATTERISTICHE E DATI TECNICI SPECIFICATIONS AND TECHNICAL DATA

MODELLO MODEL	CODICE CODE	LUNGHEZZA CAVO ROPE LENGTH mt.
TXZ 1.5	405TXZ00015	1.5
TXZ 2	405TXZ00020	2.0
TXZ 2.5	405TXZ00025	2.5
TXZ 3	405TXZ00030	3.0
TXZ 3.5	405TXZ00035	3.5
TXZ 4	405TXZ00040	4.0
TXZ 4.5	405TXZ00045	4.5
TXZ 5	405TXZ00050	5.0
TXZ 6	405TXZ00060	6.0



Per ordinare un **comando doppio**, ad esempio da 2 e 2.5 mt.:  
Codice 405TXZ00020 = 2 mt.  
Codice 405TXZ00025 = 2.5 mt.  
Comando per pto serie compatte:  
Codice 208K0490000

To order a **double control**, 2 mt. and 2.5 mt. for example:  
Code 405TXZ00020 = 2 mt.  
Code 405TXZ00025 = 2.5 mt.  
Control for compact pto series:  
Code 208K0490000

**PB 405TXZ00030**

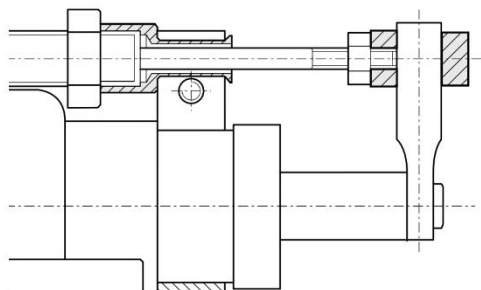
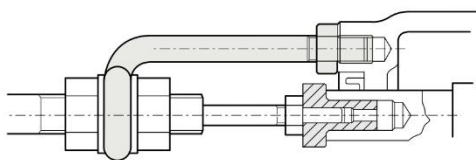


**TXZ**

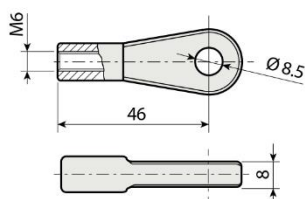
**COMANDO MECCANICO A LEVA SINGOLA**  
*SINGLE-LEVER MECHANICAL CONTROL*

KIT MONTAGGIO TELECOMANDO SU PRESA  
DI FORZA MECCANICA  
*MOUNTING KIT FOR REMOTE CONTROL ON MECHANICAL PTO*  
**CODICE / CODE 19082080100**

KIT MONTAGGIO TELECOMANDO  
SU PRESA DI FORZA SERIE 5  
*MOUNTING KIT FOR REMOTE CONTROL ON PTO SERIES 5*  
**CODICE / CODE 19682080190**



TERMINALE AD OCCHIELLO / *EYELET TERMINAL*  
**CODICE / CODE 0990226200**



ISTRUZIONI DI MONTAGGIO ADESIVI  
SULLA LEVA DEL COMANDO  
*HOW TO FIT STICKERS ON CONTROL LEVER*

- Il comando viene fornito solo ed esclusivamente con la leva singola rossa.
- Al prodotto vengono allegati due adesivi neri; essi vanno utilizzati, se necessario, per differenziare il colore della leva (ad esempio: comando PTO rosso + comando distributore nero, ecc).
- *The mechanical control is supplied with the single red lever only.*
- *Two black stickers are supplied with the product; these should be used, if necessary, to distinguish the lever colour (e.g.: red PTO control + black distributor control, etc).*

